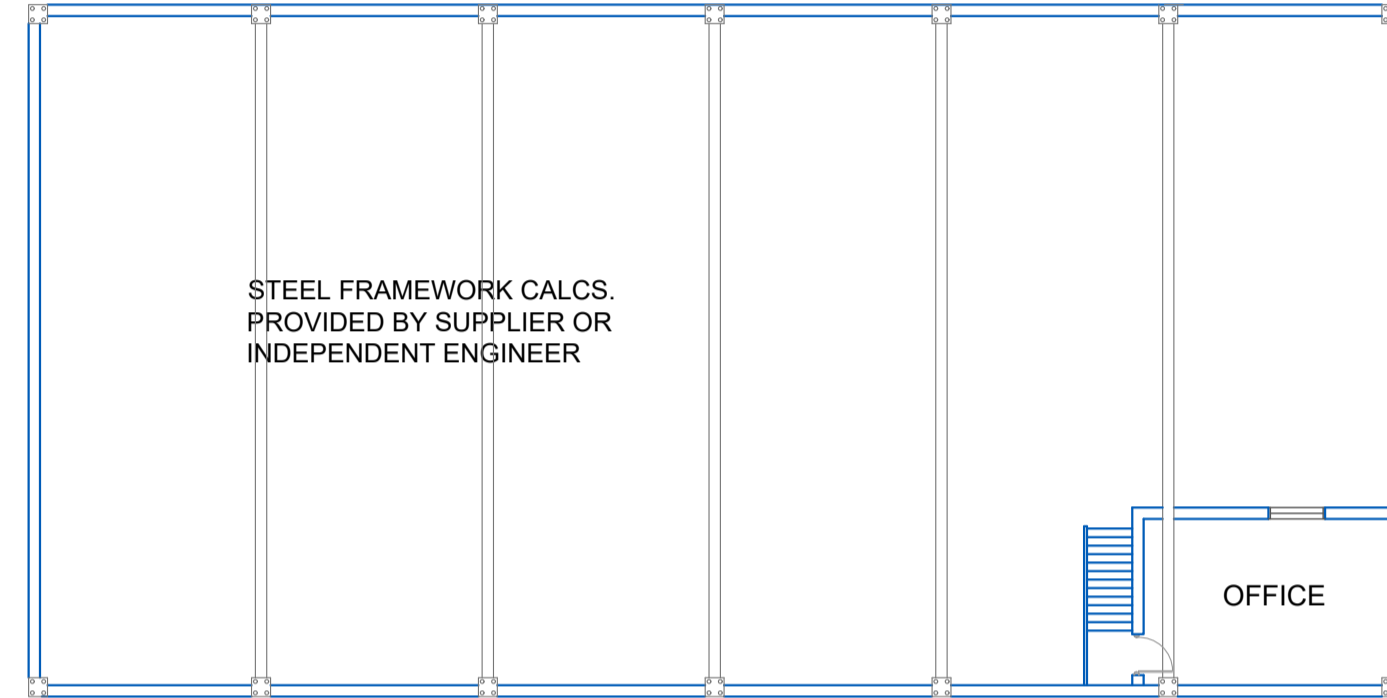
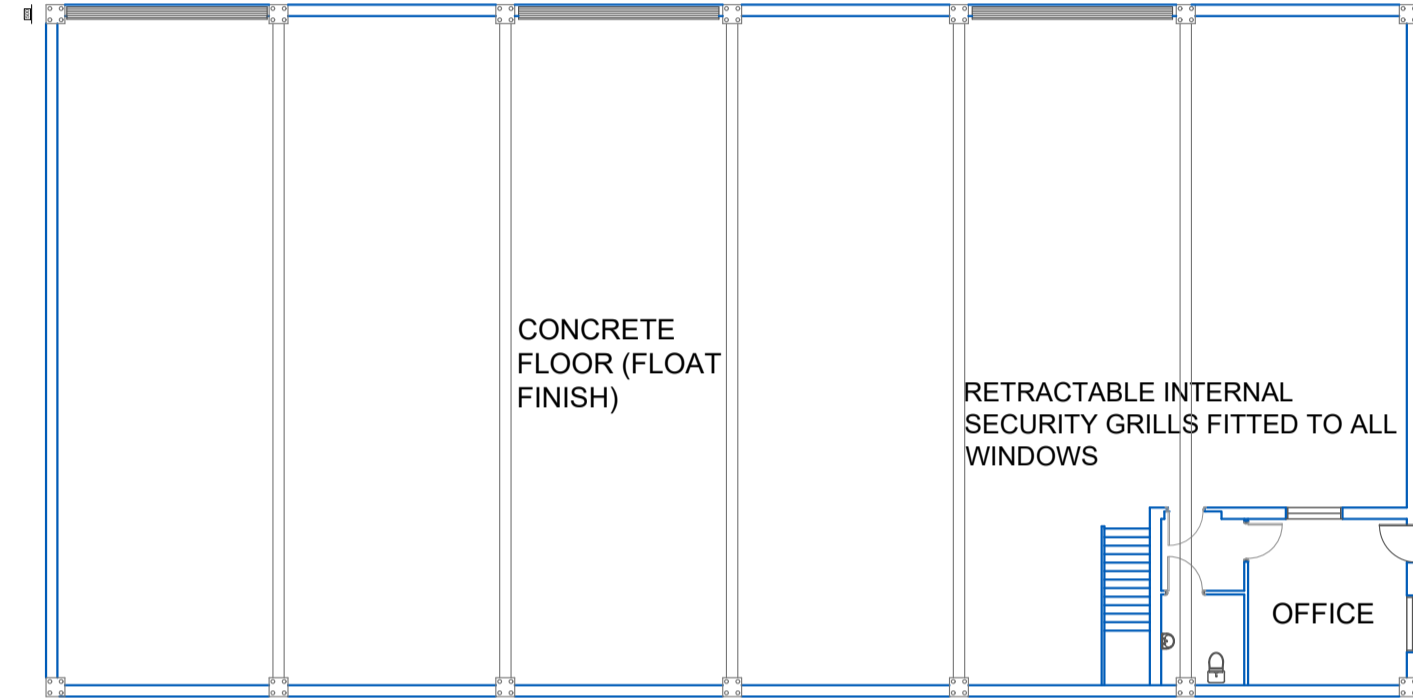
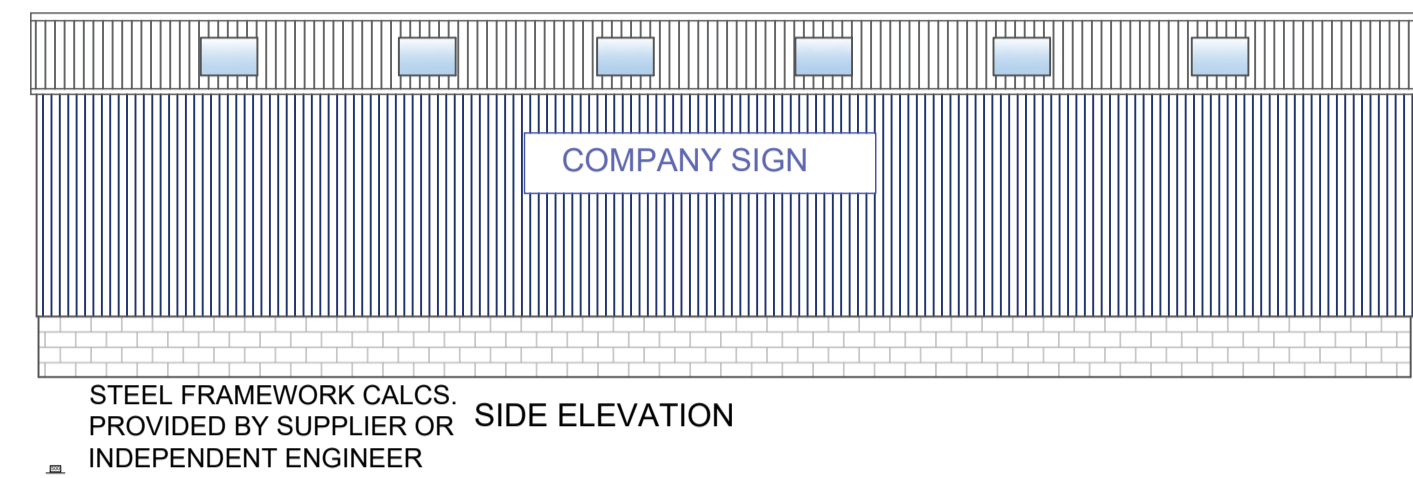
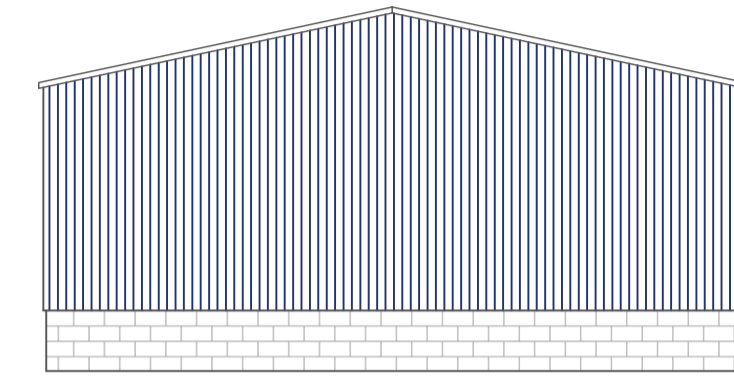
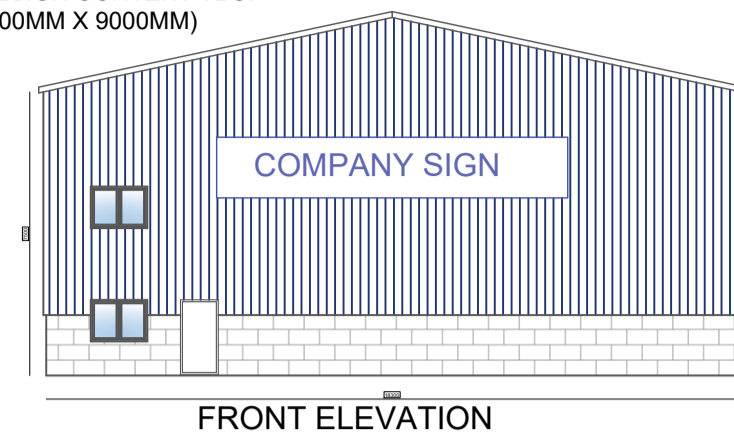


2880 DPI WATERPROOF AND UV RESISTANT ALUMINIUM COMPANY SIGNAGE - DESIGN CONTENT TBC. (MAX SIZE 1500MM X 9000MM)



- SCALE
- RIDGE HEIGHT 9.63 M
  - EAVES HEIGHT 7.50 M
  - LENGTH 36.30 M
  - WIDTH 18.30 M
  - ROOF PITCH 12-15°
  - GROSS FOOTPRINT OF SHED 664 M²

MATERIALS - STEEL PORTAL FRAME STRUCTURE  
WALLS - 1800MM HIGH CONC. BLOCK WALL WITH METAL BOX PROFILE SHEETING (BLUE) ABOVE  
ROOF - ETERNIT FIBRE CEMENT ROOF SHEETS (GREY) WITH TRANSLUCENT GRP FIBRE-GLASS SHEET ROOF-LIGHTS

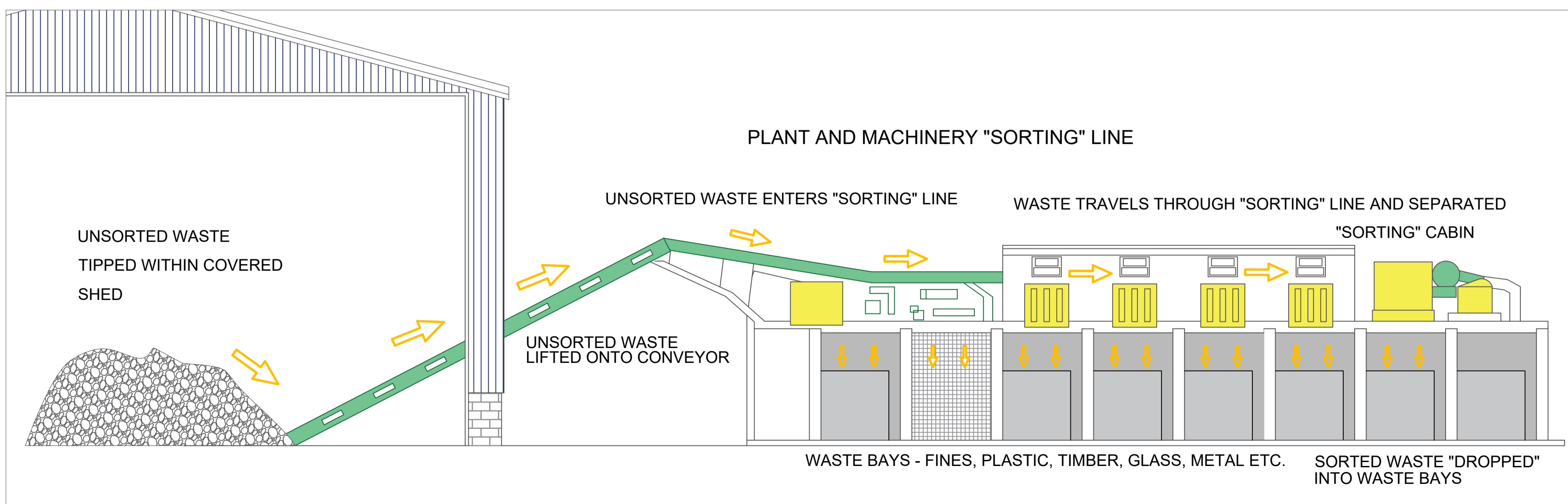
- DOORS & WINDOWS
- GALV. STEEL ROLLER SHUTTER DOORS
  - GALV. STEEL PEDESTRIAN DOOR
  - PVCu WINDOWS WITH RETRACTABLE INTERNAL SECURITY GRILLES

- FLOOR
- CONCRETE INTERNAL FLOOR
  - MIN. 500MM CONC. PERIMETER SURROUND
  - CONC. HARD STANDING AT DOOR ENTRANCES
- MISC - HIGH LEVEL GANTRY CRANE  
ALL STEELWORK SHOT BLASTED PRIOR TO BASE COAT OF HIGH BUILD ZINC PHOSPHATE PRIMER AND FINISHING COAT OF GREY ALKYD BASED PAINT  
FULL SPECIFICATION FOR INTERNAL STEEL SUPPORTING STRUCTURE (INCL. POSTS, TRUSSES ETC.), AND FOUNDATIONS TO BE BASED ON MANUFACTURER'S SPECIFICATION & ENGINEER'S CALCULATIONS. ALL STEEL WORK TO BE IN COMPLIANCE WITH BS 5502-PART 22:2003 AS AMENDED

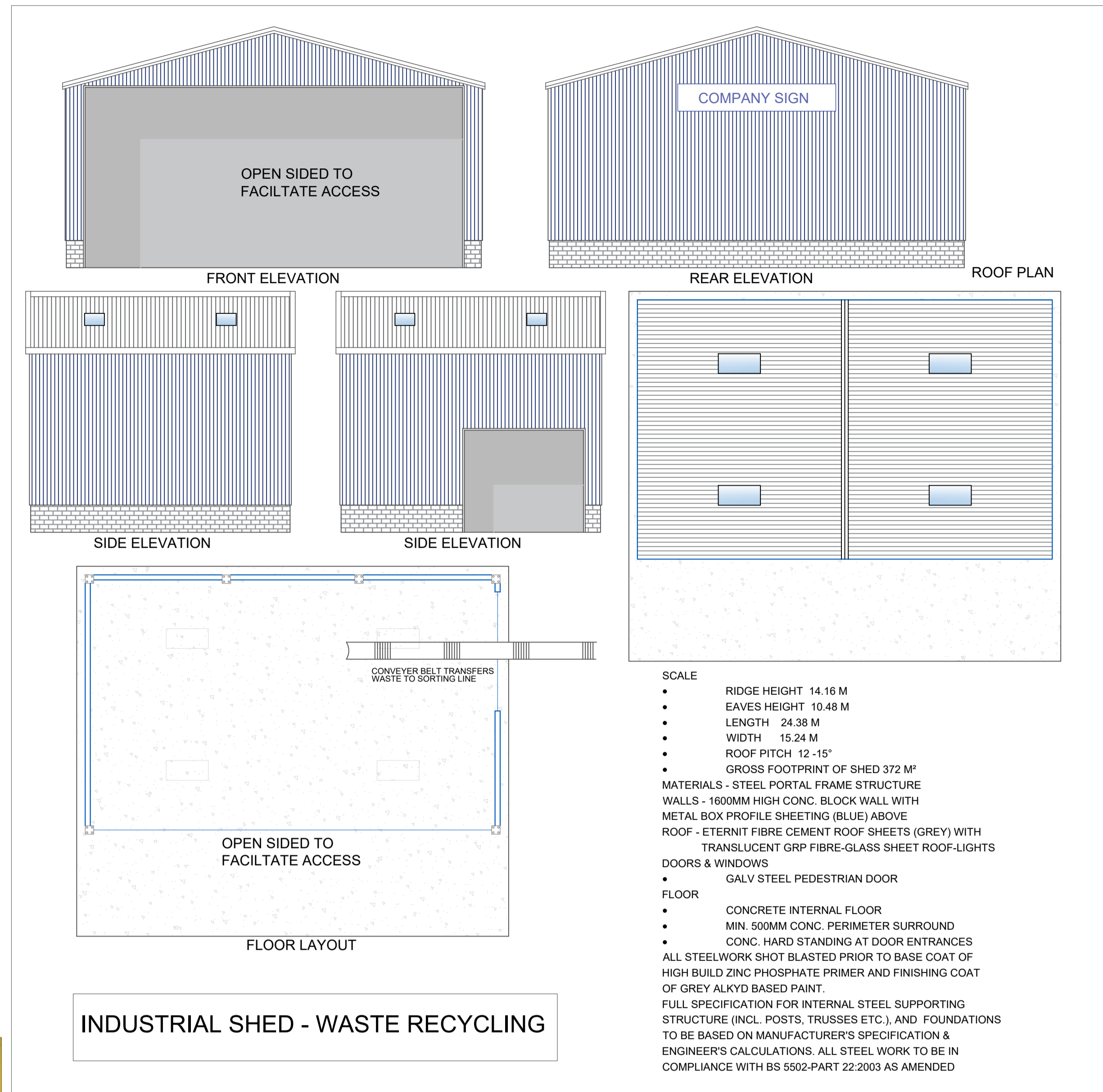
**INDUSTRIAL SHED B2 (FABRICATION)**



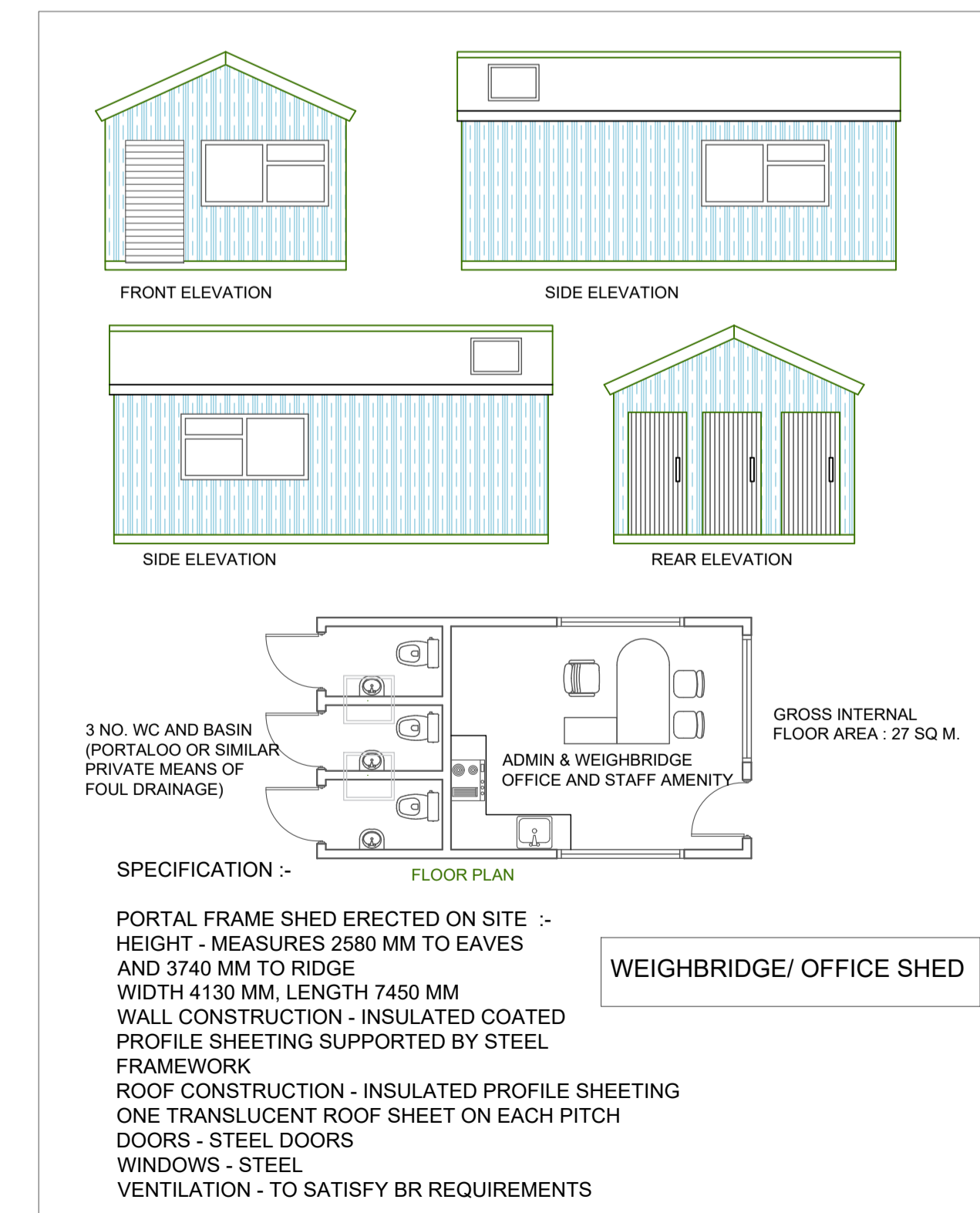
EXAMPLE OF A SORTING LINE WITH WASTE BAYS BELOW



FULL PLANNING APPLICATION FOR THE ERECTION OF 2 NO. PORTAL FRAME INDUSTRIAL BUILDINGS FOR USE AS :-  
(I) A FABRICATION WORKSHOP (B2) AND  
(II) A PROPOSED WASTE RECYCLING & TRANSFER OPERATION. ALONGSIDE ANCILLARY EXTERNAL STRUCTURES, PLANT, PARKING, DRAINAGE, LANDSCAPING, ASSOCIATED WORKS AND A CONSEQUENTIAL CHANGE OF USE OF SITE FOR WASTE PROCESSING AND STORAGE (B8) PURPOSES.



- SCALE
- RIDGE HEIGHT 14.16 M
  - EAVES HEIGHT 10.48 M
  - LENGTH 24.38 M
  - WIDTH 15.24 M
  - ROOF PITCH 12-15°
  - GROSS FOOTPRINT OF SHED 372 M²
- MATERIALS - STEEL PORTAL FRAME STRUCTURE  
WALLS - 1800MM HIGH CONC. BLOCK WALL WITH METAL BOX PROFILE SHEETING (BLUE) ABOVE  
ROOF - ETERNIT FIBRE CEMENT ROOF SHEETS (GREY) WITH TRANSLUCENT GRP FIBRE-GLASS SHEET ROOF-LIGHTS
- DOORS & WINDOWS
- GALV. STEEL PEDESTRIAN DOOR
- FLOOR
- CONCRETE INTERNAL FLOOR
  - MIN. 500MM CONC. PERIMETER SURROUND
  - CONC. HARD STANDING AT DOOR ENTRANCES
- ALL STEELWORK SHOT BLASTED PRIOR TO BASE COAT OF HIGH BUILD ZINC PHOSPHATE PRIMER AND FINISHING COAT OF GREY ALKYD BASED PAINT.  
FULL SPECIFICATION FOR INTERNAL STEEL SUPPORTING STRUCTURE (INCL. POSTS, TRUSSES ETC.), AND FOUNDATIONS TO BE BASED ON MANUFACTURER'S SPECIFICATION & ENGINEER'S CALCULATIONS. ALL STEEL WORK TO BE IN COMPLIANCE WITH BS 5502-PART 22:2003 AS AMENDED



**ELEVATIONS & LAYOUT DRAWING**

LAND AT HAYES ROAD, SULLY, BARRY, CF64 5ZE

PROPOSED 2 NO. PORTAL FRAME BUILDINGS FOR B2 FABRICATION AND WASTE PROCESSING USE

SCALE @ A1	DATE
1 : 200, 100	NOVEMBER 2022

JOB NO.	DRAWING NO.	REVISION
2117.a	GENPL/001	

THIS DRAWING HAS BEEN PRODUCED SOLELY FOR THE PURPOSES OF OBTAINING PLANNING APPROVAL. ALL CONSTRUCTION DETAIL AT BUILDING REGULATIONS STAGE



**PLANNING**

PLANNING AND DEVELOPMENT CONSULTANTS

[www.jcrplanning.com](http://www.jcrplanning.com)

UNIT 2 AND 3  
CROSS HANDS BUSINESS WORKSHOPS  
HEOL PARC MAWR, CROSS HANDS,  
CARMARTHENSIRE, SA14 6RE  
tel. 01269 267180  
info@jcrplanning.com