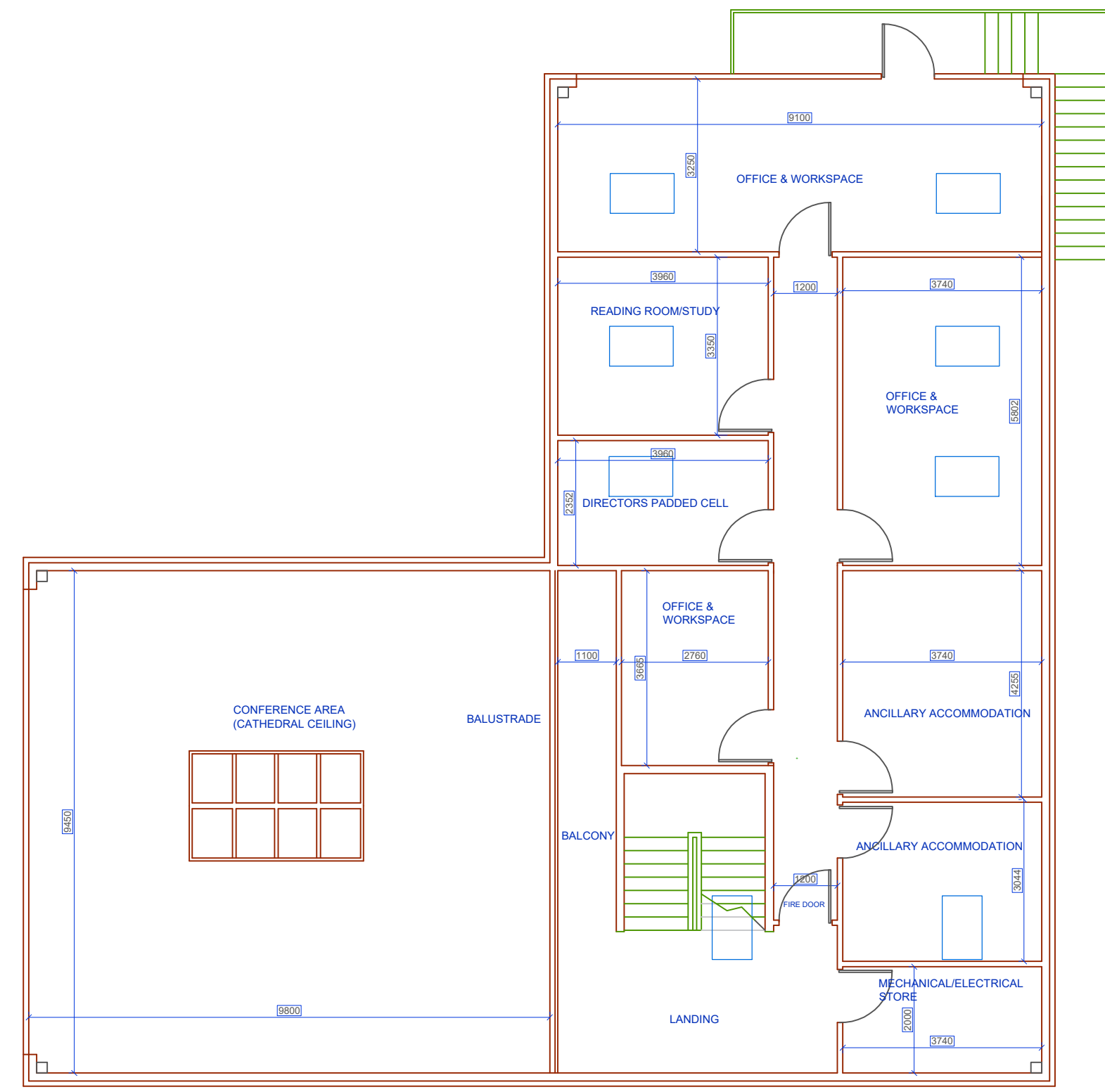
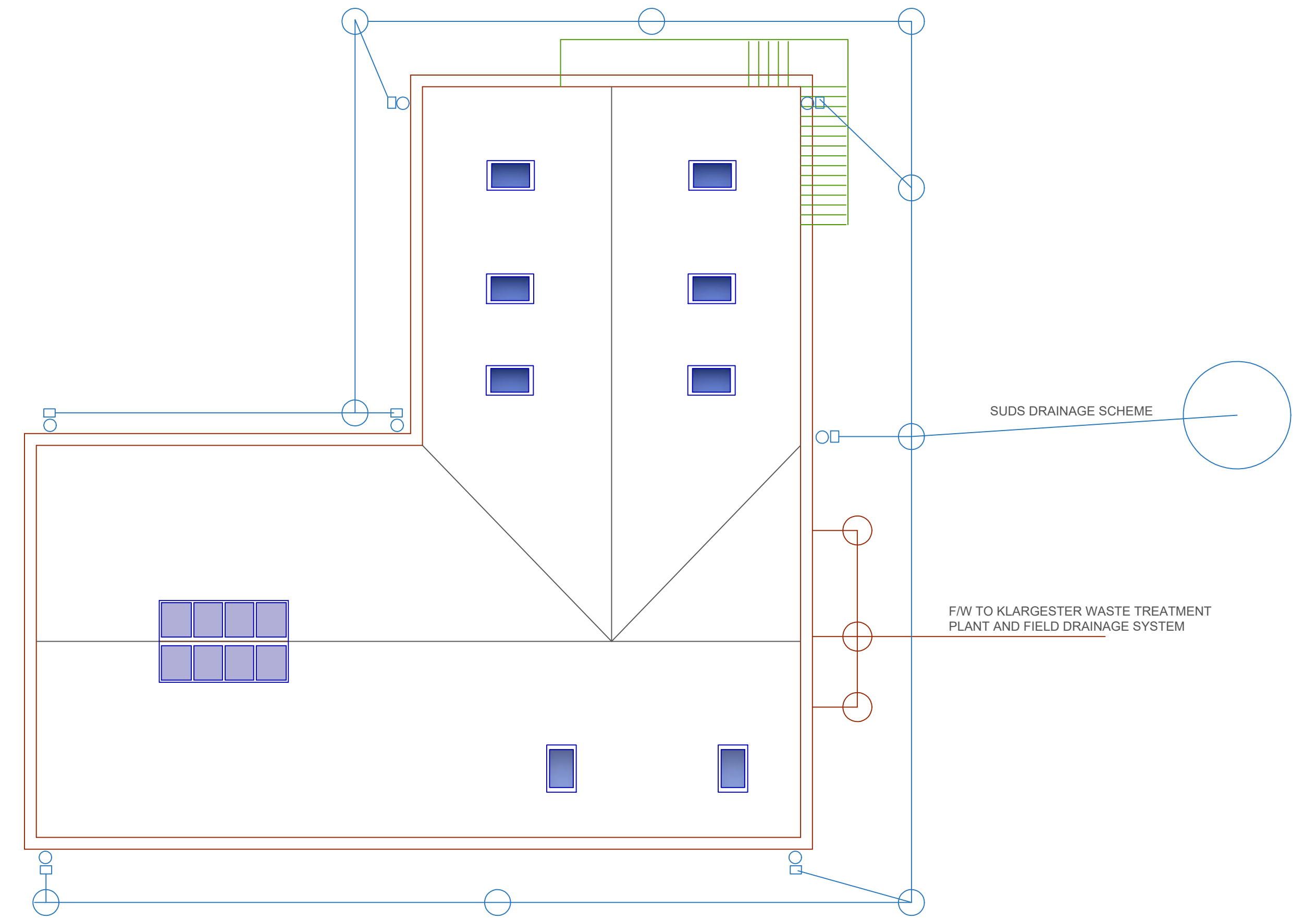


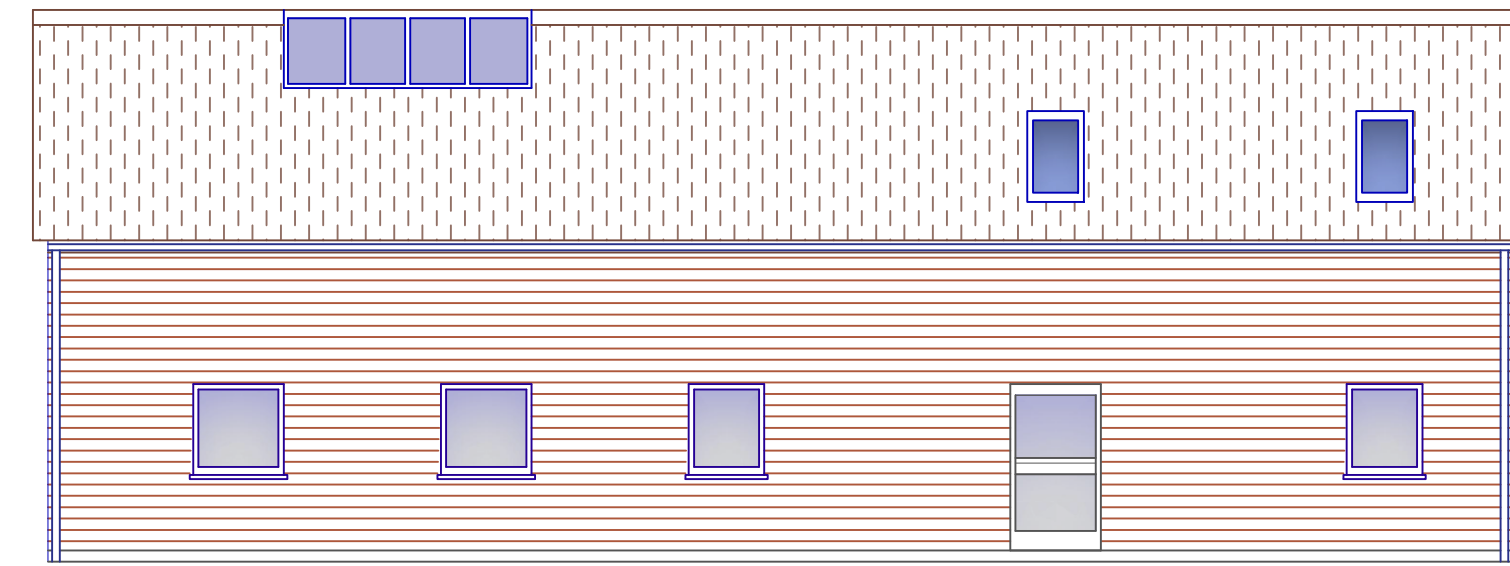
GROUND FLOOR ARRANGEMENT



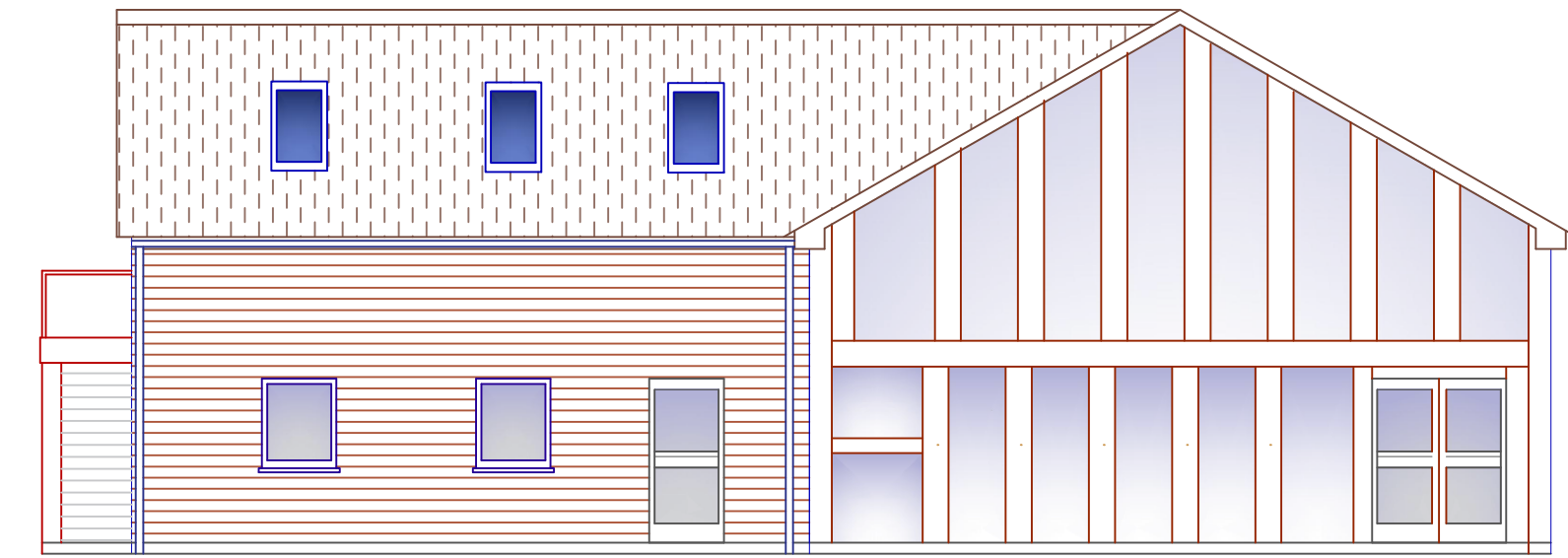
FIRST FLOOR ARRANGEMENT



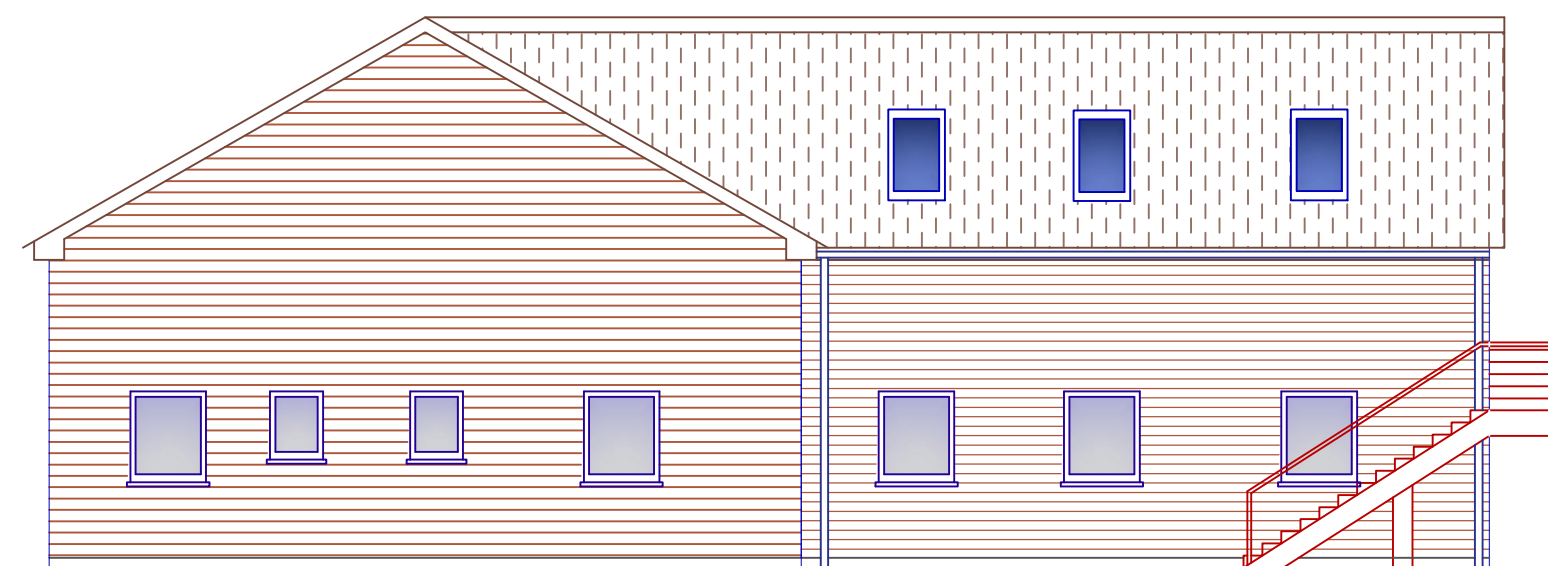
ROOF ARRANGEMENT



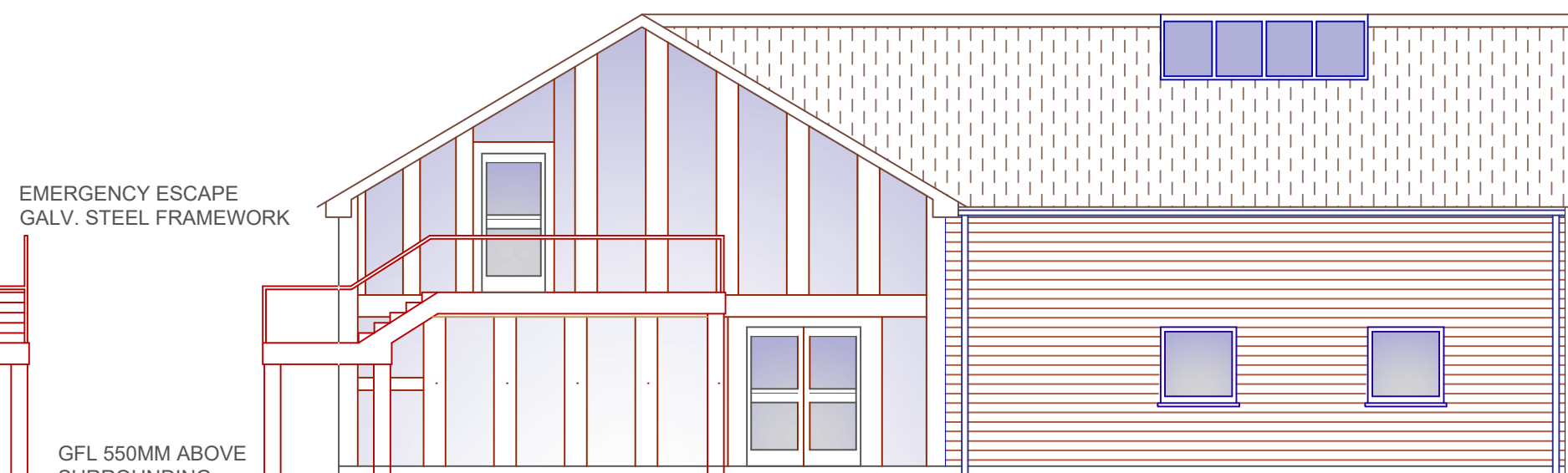
SOUTH ELEVATION (FRONT)



WEST ELEVATION (SIDE)

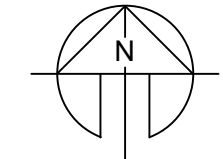


EAST ELEVATION (SIDE)



NORTH ELEVATION (REAR)

HORIZONTAL OAK SHIPLAP CLADDING (TREATED)
 POWDER COATED ALUMINIUM FASCIA AND RAINWATER GOODS (OFF-WHITE)
 DARK GREY ENGINEERING BRICK PLINTH WITH LIMEGRETE SLAB TO
 GIVE GFL 550MM ABOVE SURROUNDING GROUND
 POWDER COATED STEEL CRITICAL DOUBLE GLAZED WINDOWS AND SOLID OAK DOORS
 METAL PROFILE SHEETING ROOF (DARK GREY)
 ALUMINIUM VELUX WINDOWS AND ATRIUM
 OAK FRAMED DOUBLE GLAZED GABLE FEATURES. CONSTRUCTION DRAWINGS FROM
 CARPENTER OAK LTD. WILL CONFIRM FINAL DETAILS.



PROPOSED PHOTO-VOLTAIC SOLAR FARM AND ATTENDANT INFRASTRUCTURE AND EQUIPMENT INCLUDING OFFICE/EXHIBITION/ACCOMMODATION BUILDING, SUBSTATION, INVERTERS, TRANSFORMERS, ACCESS TRACK, MONITORING EQUIPMENT, LANDSCAPING, FENCING AND DRAINAGE.

LAND AT MORFA PINGETT, PINGED, KIDWELLY, CARMARTHENSHIRE SA16 0JE

SOLAR PAVILION

ELEVATIONS AND FLOOR LAYOUT

SCALE : 1 : 100 @ A1

DRAWING NO: SV/766A/002a JANUARY 2020