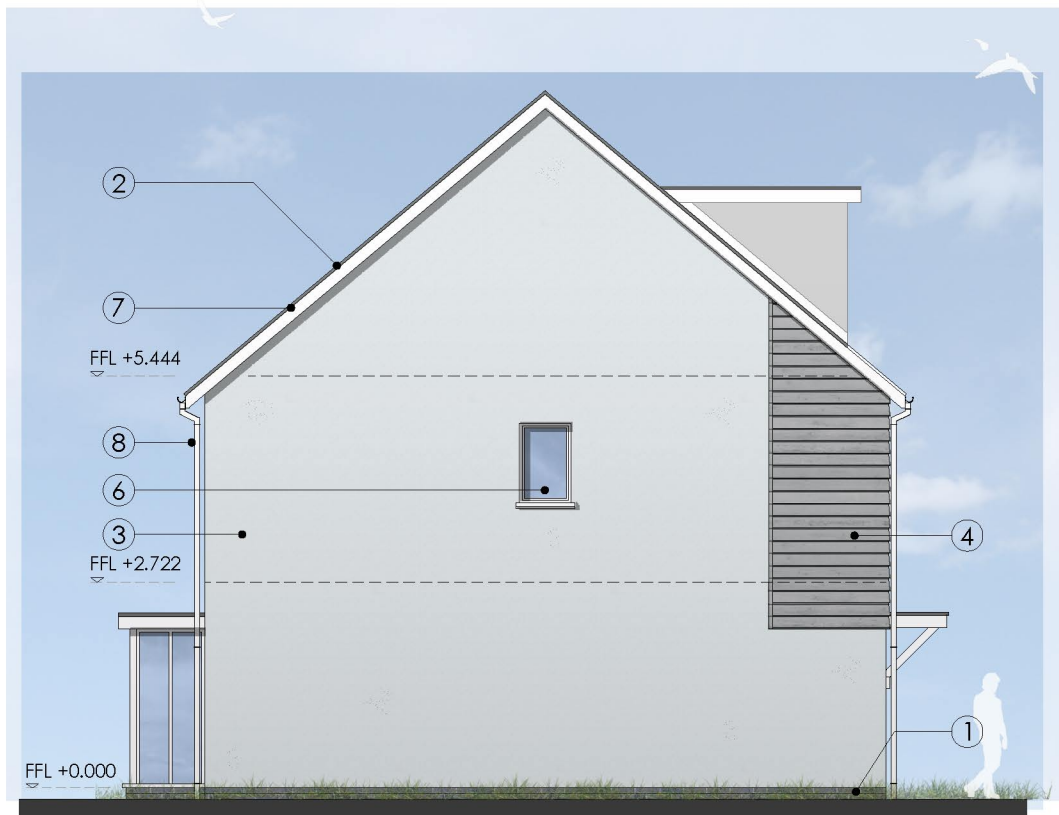




FRONT ELEVATION  
OPTION 1

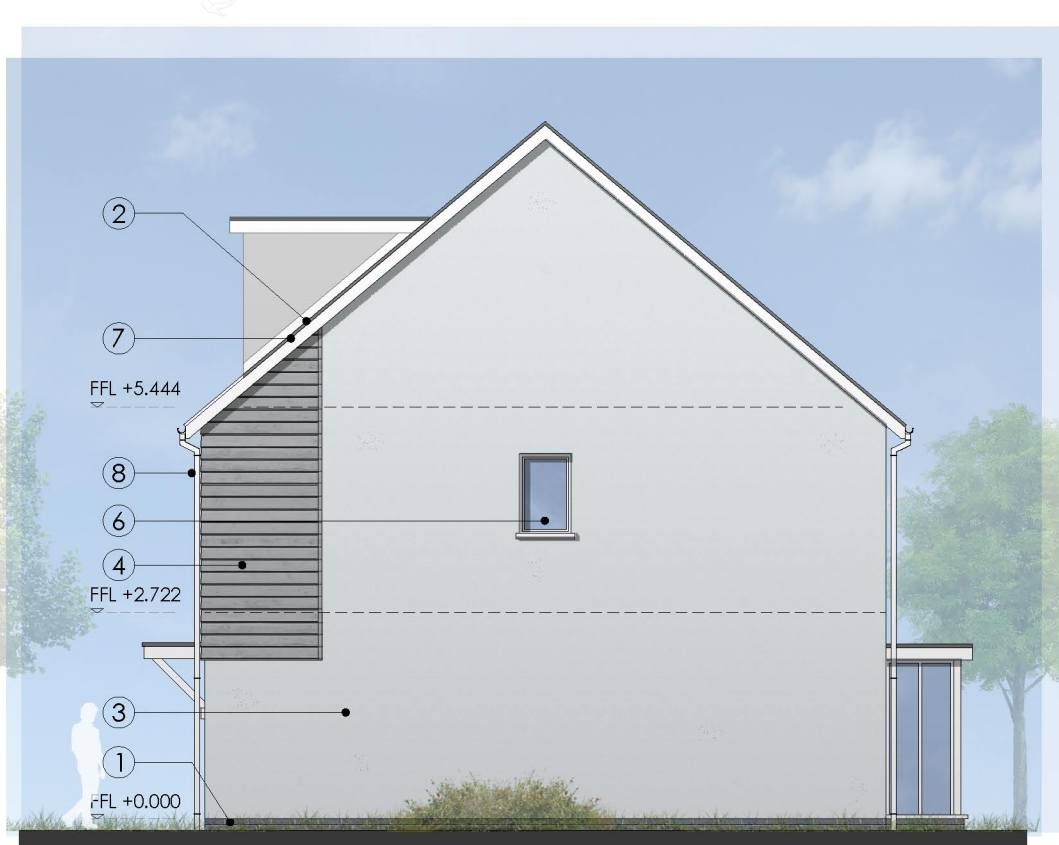


LEFT SIDE ELEVATION  
OPTION 1

- EXTERNAL MATERIAL FINISHES SCHEDULE:**
- ① Approved Engineering brickwork to plinth. Colour Blue.
  - ② Roof Tiles. Approved Concrete Tiles. Colour Grey.
  - ③ Approved Through Coloured Render Wall Finish.
  - ④ Approved Fibre Cement Weatherboard Cladding. Colours to be confirmed.
  - ⑤ Approved Stone Wall Finish. Colour to be confirmed.
  - ⑥ Upvc Double Glazed Windows, Screens and Doors. Colour White.
  - ⑦ Upvc fascias and soffits. Colour White.
  - ⑧ Upvc Rainwater Goods. Colour White.



REAR ELEVATION  
OPTION 1



RIGHT SIDE ELEVATION  
OPTION 1