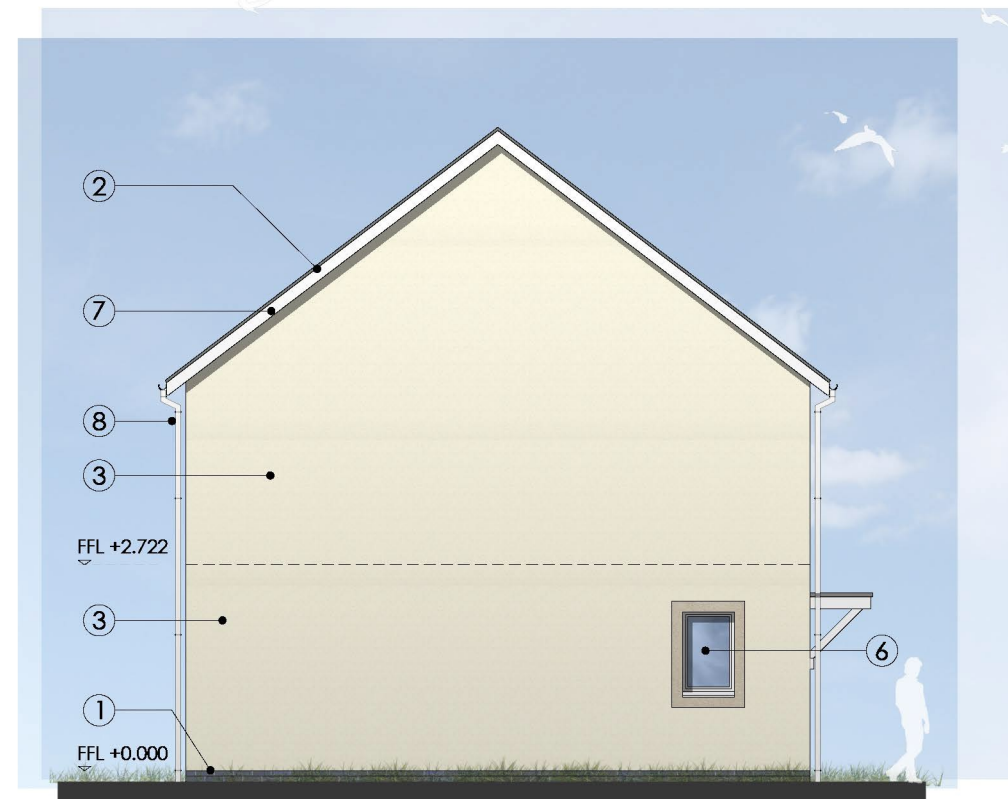




FRONT ELEVATION  
OPTION 2



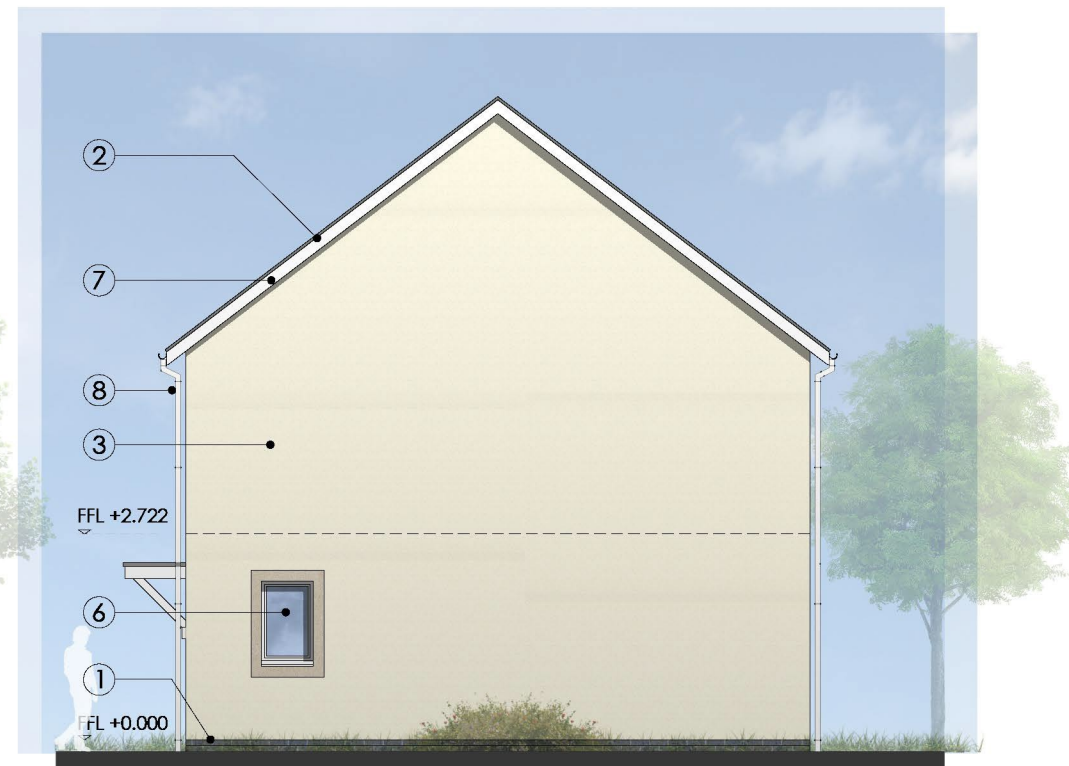
LEFT SIDE ELEVATION  
OPTION 2

**EXTERNAL MATERIAL FINISHES SCHEDULE:**

- ① Approved Engineering brickwork to plinth. Colour Blue.
- ② Roof Tiles. Approved Concrete Tiles. Colour Grey.
- ③ Approved Through Coloured Render Wall Finish.
- ④ Approved Fibre Cement Weatherboard Cladding. Colours to be confirmed.
- ⑤ Approved Stone Wall Finish. Colour to be confirmed.
- ⑥ Upvc Double Glazed Windows, Screens and Doors. Colour White.
- ⑦ Upvc fascias and soffits. Colour White.
- ⑧ Upvc Rainwater Goods. Colour White.



REAR ELEVATION  
OPTION 2



RIGHT SIDE ELEVATION  
OPTION 2