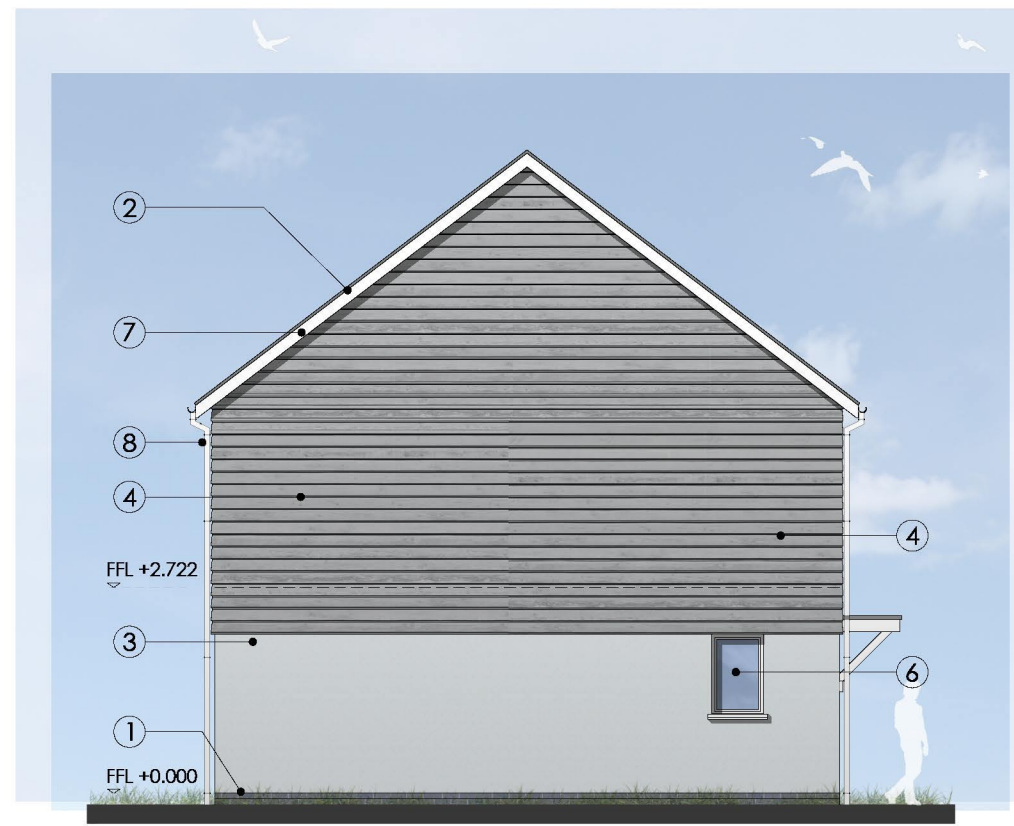




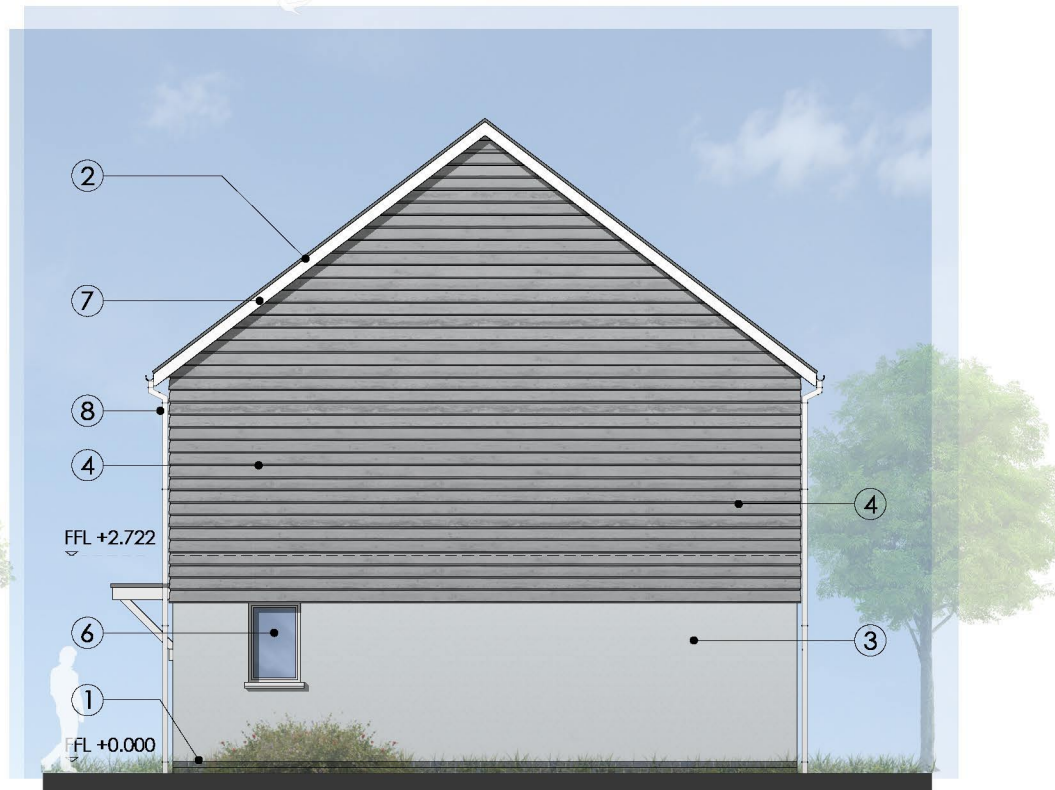
FRONT ELEVATION
OPTION 1



LEFT SIDE ELEVATION
OPTION 1



REAR ELEVATION
OPTION 1



RIGHT SIDE ELEVATION
OPTION 1

- EXTERNAL MATERIAL FINISHES SCHEDULE:**
- ① Approved Engineering brickwork to plinth. Colour Blue.
 - ② Roof Tiles. Approved Concrete Tiles. Colour Grey.
 - ③ Approved Through Coloured Render Wall Finish.
 - ④ Approved Fibre Cement Weatherboard Cladding. Colours to be confirmed.
 - ⑤ Approved Stone Wall Finish. Colour to be confirmed.
 - ⑥ Upvc Double Glazed Windows, Screens and Doors. Colour White.
 - ⑦ Upvc fascias and soffits. Colour White.
 - ⑧ Upvc Rainwater Goods. Colour White.