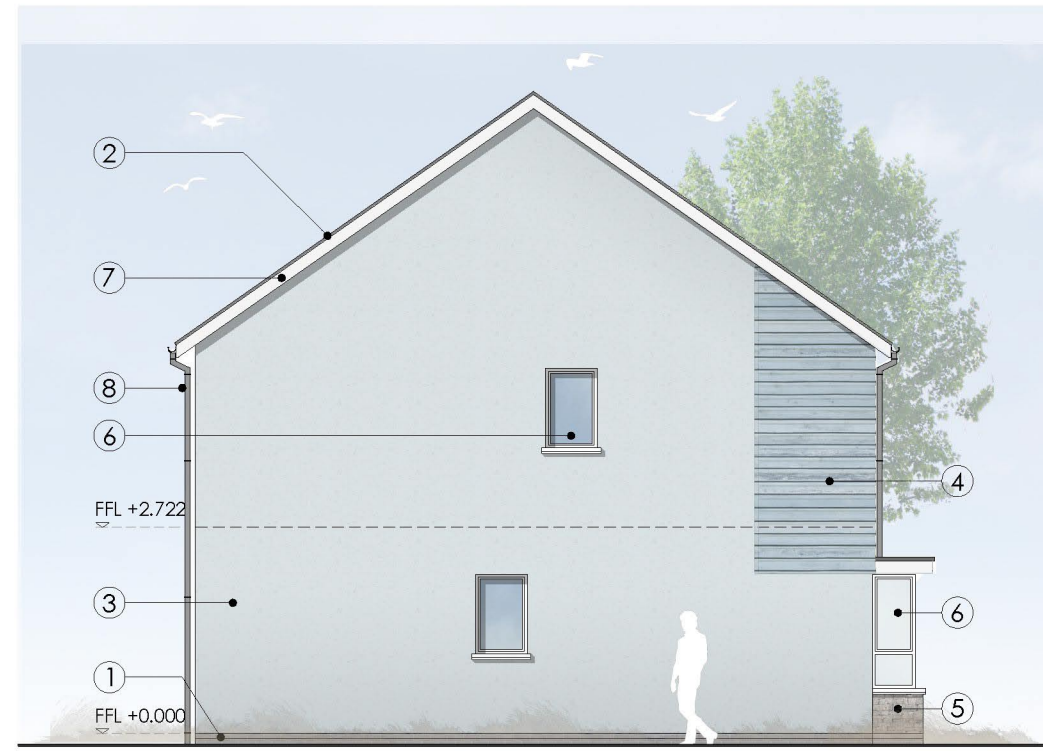




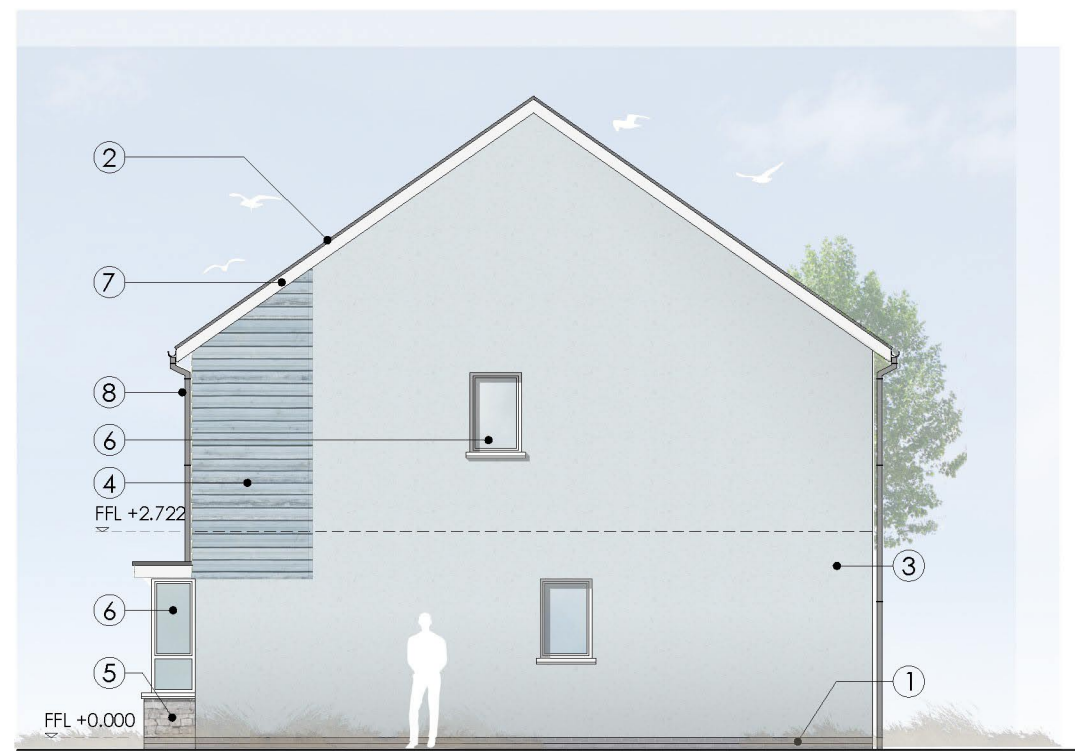
FRONT ELEVATION
OPTION 5



LEFT SIDE ELEVATION
OPTION 5



REAR ELEVATION
OPTION 5



RIGHT SIDE ELEVATION
OPTION 5

EXTERNAL MATERIAL FINISHES SCHEDULE:

- ① Approved Engineering brickwork to plinth. Colour Blue.
- ② Roof Tiles. Approved Concrete Tiles. Colour Grey.
- ③ Approved Through Coloured Render Wg^{ll} finish.
- ④ Approved Fibre Cement Weatherboard Cladding. Colours to be confirmed.
- ⑤ Approved Stone Wall Finish. Colour to be confirmed.
- ⑥ Upvc Double Glazed Windows, Screens and Doors. Colour White.
- ⑦ Upvc fascias and soffits. Colour White.
- ⑧ Upvc Rainwater Goods. Colour White.