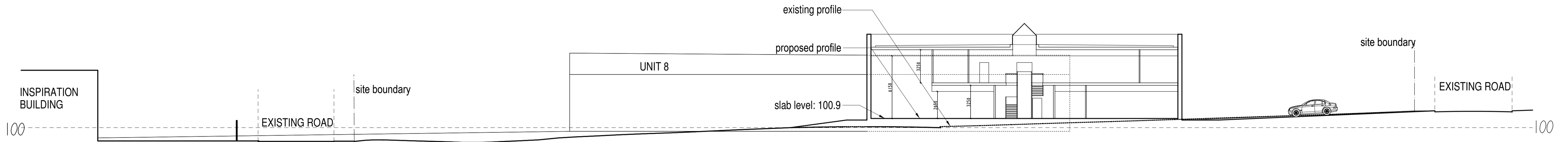
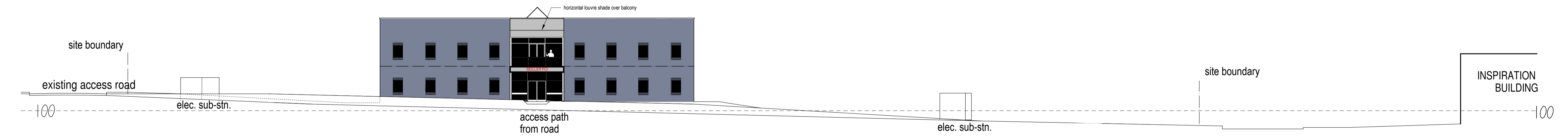


SITE SECTION AA



SITE SECTION BB



ELEVATION (N) TO PHOENIX WAY

D	levels amended	SNBW	13.11.17
C	roadlight amended	SNBW	10.11.17
B	minor level changes	SNBW	3.11.17
A	slab level revised; further sections added	SNBW	31.10.17
rev	description	author	date

Stephen Waldron Architects Ltd
 07584 056 714; 01855 647 618; enquiries@stephenwaldronarchitects.com; www.stephenwaldronarchitects.com

client	Moller PCI and others		
project	New HQ site, Garngoch Business Village Swansea, SA4 9WF		
drawing title	Site sections		
drawing no.	scale	date	signed
1622.PLO6D	1:200 @ A1	23.10.17	SNBW