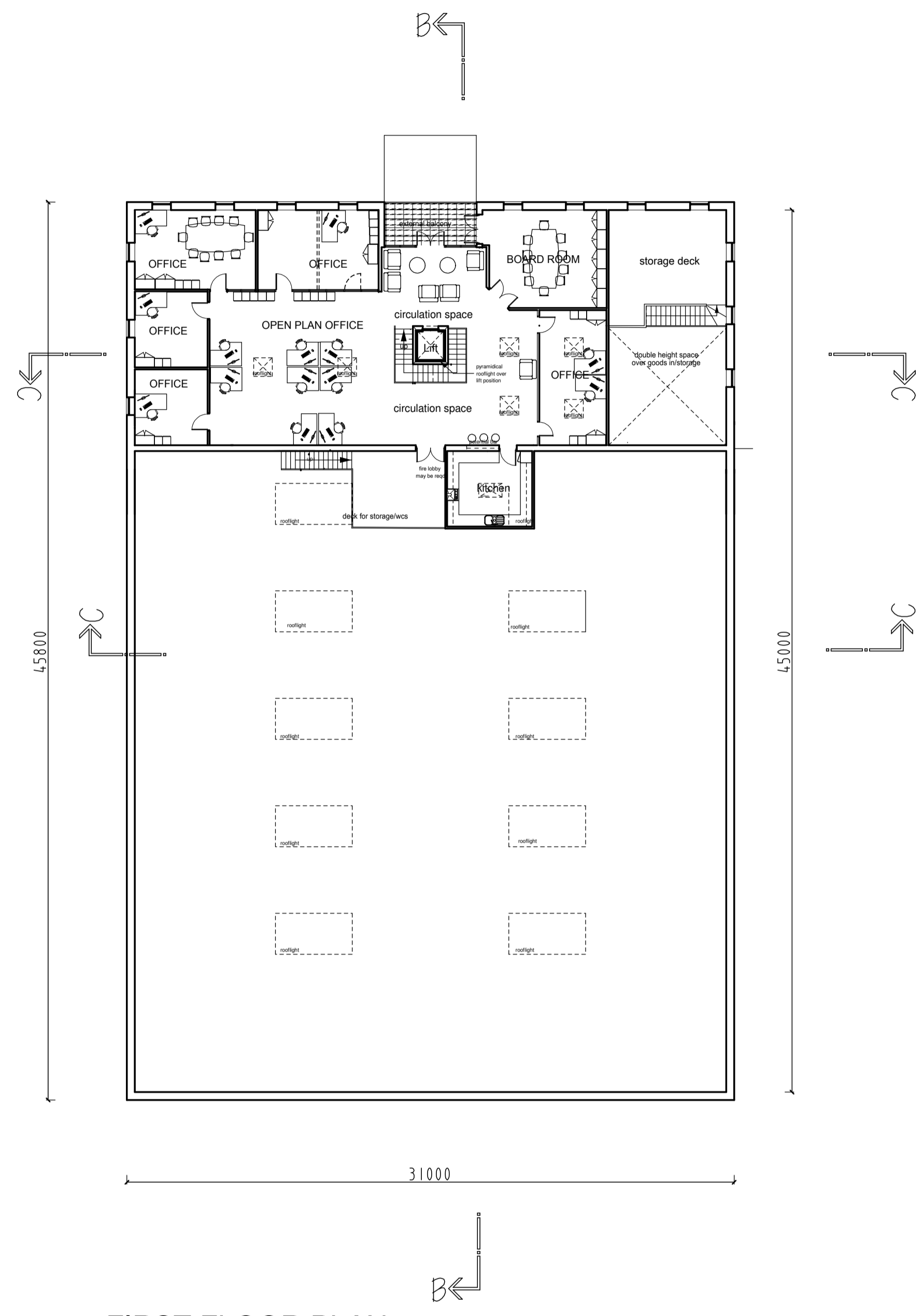
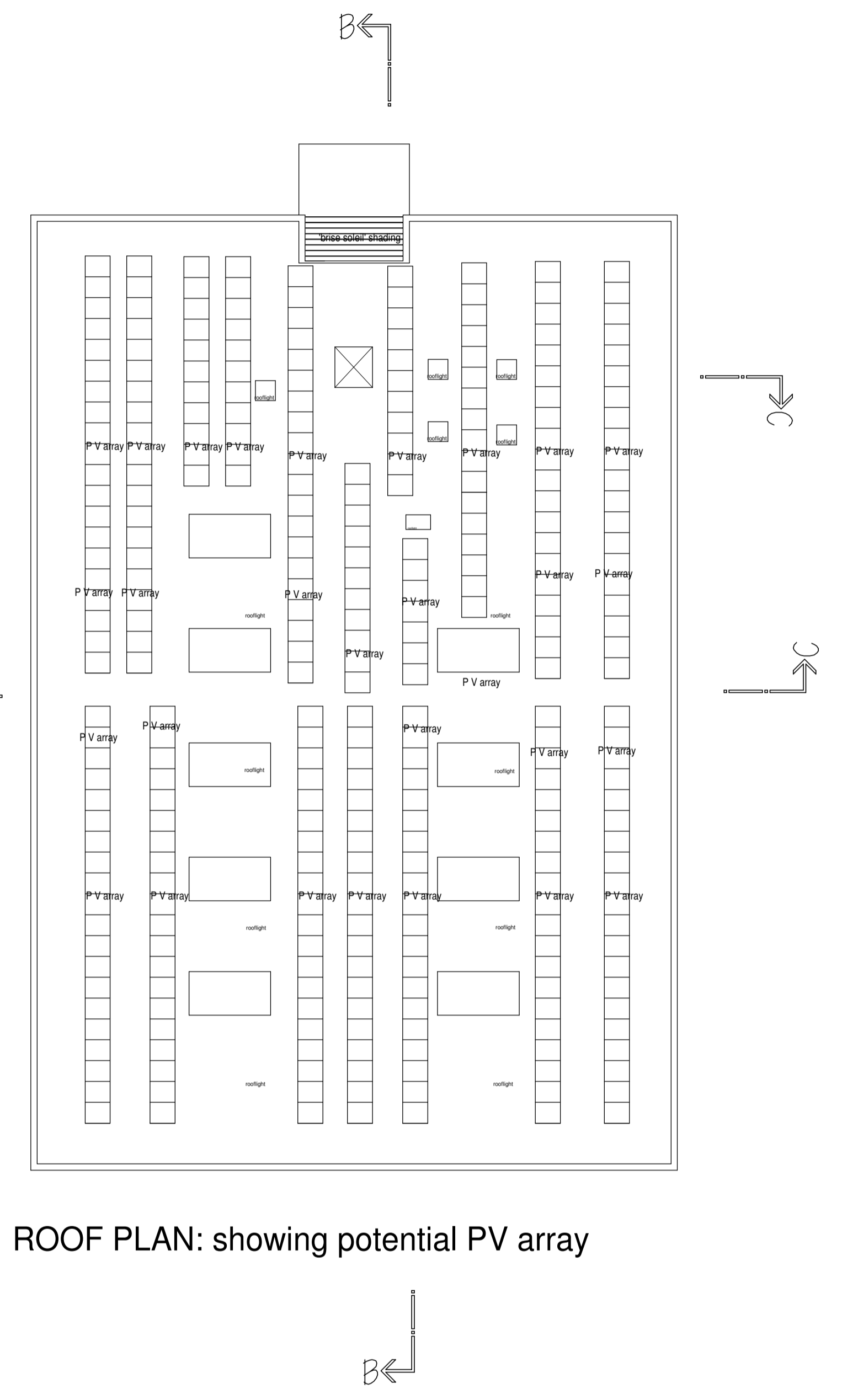


GROUND FLOOR PLAN
TOTAL GROUND FLOOR AREA: 1,355m²

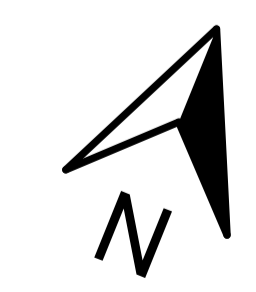
TOTAL GROSS INTERNAL AREA OF BUILDING: 1,698m²




FIRST FLOOR PLAN
entire floor inc. decks: 343m²



ROOF PLAN: showing potential PV array



D	Structural grid revised	SNBW	13.11.17
C	Structural grid added to offices; rooflights amended; parking and grid floor access indicated	SNBW	10.11.17
B	section lines added	SNBW	24.10.17
A	minor amendments as detailed office plans	SNBW	20.10.17
rev	description	author	date
 Stephen Waldron Architects Ltd 07584 056 714 · 01685 647 618 · enquiries@stephenwaldronarchitects.com · www.stephenwaldronarchitects.com			
client			
Moller PCI and others			
project			
New HQ site, Garngoch Business Village Swansea, SA4 9WF			
drawing title			
Overall floor plans			
drawing no.	scale	date	signed
1622.PLO5D	1:200 @ A1	20.10.17	SNBW