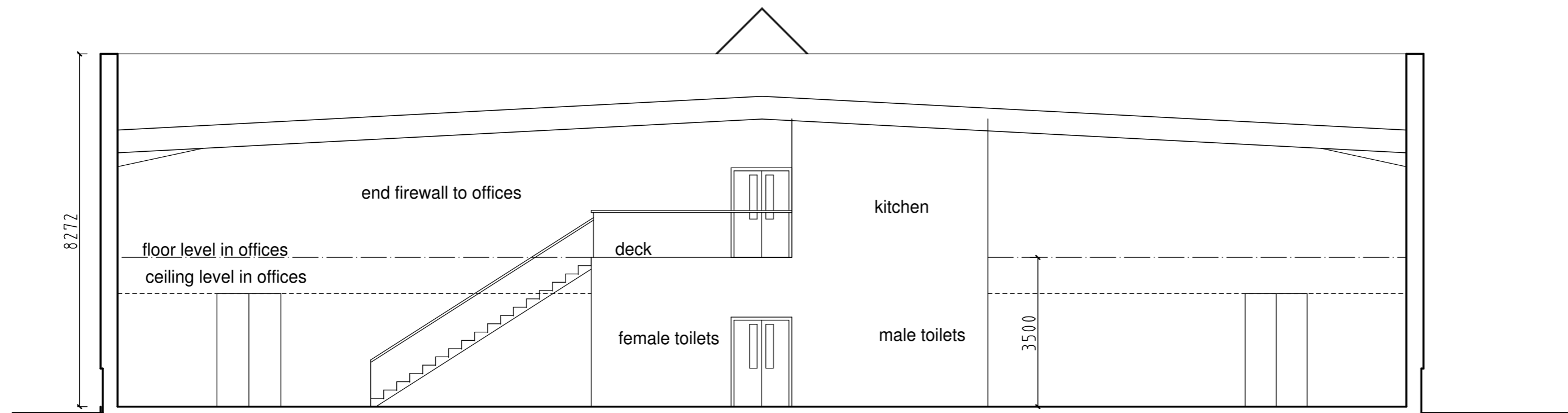
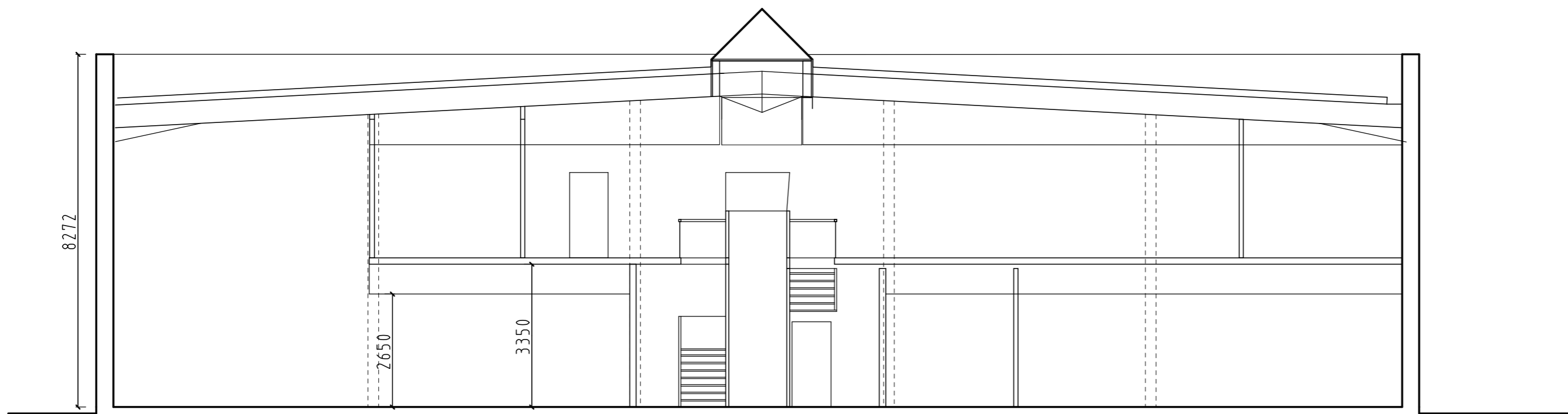



SECTION BB looking west through complex



SECTION CC looking north through warehouse



SECTION AA looking south through offices

C	levels revised	SNBW	13.11.17
B	rooflight revised	SNBW	10.11.17
A	section CC added	SNBW	23.10.17
rev	description	author	date
 Stephen Waldron Architects Ltd <small>07584 056 714; 01685 647 618; enquiries@stephenwaldronarchitects.com; www.stephenwaldronarchitects.com</small>			
client Moller PCI and others			
project New HQ site, Garngoch Business Village Swansea, SA4 9WF			
drawing title Building sections			
drawing no.	scale	date	signed
1622.PLO4C	1:100 @ A2	12.10.17	SNBW